

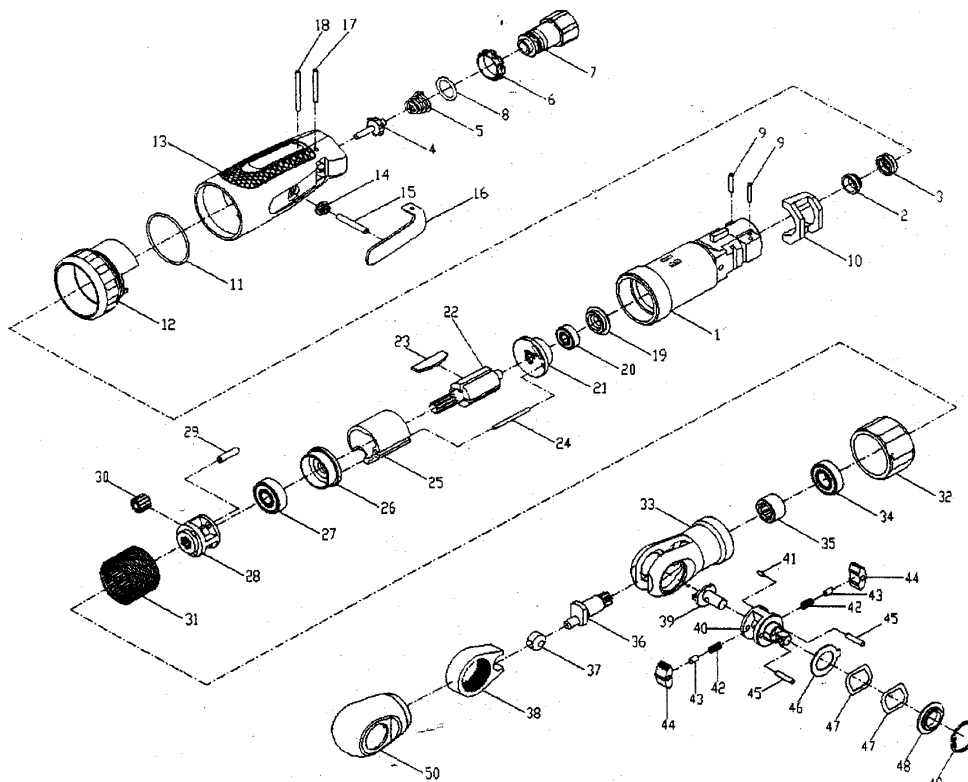


meccanocar

### Cricchetto 3/8"

### Ratchet Composite 3/8"

**Modello**  
418.00.07000.569

**Serie**  
A


Pos.	Description	Bezeichnung	Pos.	Description	Bezeichnung
07000a-01	Motor Housing Assembly/Cassa motore completa	Motorghäuse	07000a-31	Internal Gear/Ingranaggio interno	Getriebeaussering
07000a-02	Valve Seat/Sede valvola	Ventilsitz	07000a-32	Coupling Nut/Dado	Mutter
07000a-03	Valve Seat Retainer/Ritenuta sede valvola	Ventilsitzsicurezza	07000a-33	Ratchet Housing Assembly/Cassa cricchetto completa	Ratschenkopf
07000a-04	Valve Stem/Asta valvola	Ventil	07000a-34	Ball Bearing/Cuscinetto a sfere	Kugellager
07000a-05	Valve Spring/Molla valvola	Ventilfeder	07000a-35	Needle Bearing/Cuscinetto ad aghi	Nadelager
07000a-06	Silencer/Silenziatore	Schalldämpfer	07000a-36	Crankshaft/Albero	Exzenterwelle
07000a-07	Inlet Assembly/Attacco completo	Lufteingangsverschraubung	07000a-37	Drive Bushing/Boccola	Antriebsbuchse
07000a-08	Swivel Inlet O-Ring/O-ring attacco girevole	O-Ring	07000a-38	Ratchet Yoke/Goigo	Ratschenkranz
07000a-09	Swivel Inlet Retaining Pin/Spina ritenuta attacco girevole (2)	Stift (2)	07000a-39	Reverse Button/Pulsante reversibilità	Umsteuerknopf
07000a-10	Trigger Seal/Guarnizione grilletto	Dichtung	07000a-40	Ratche Anvil Assembly/Albero completo 3/8"	Antriebsspindel 3/8"
07000a-11	O-Ring	O-Ring	07000a-41	Spring Pin/Spina elastica	Federstift
07000a-12	Regulator/Regolatore	Reguliererring	07000a-42	Spring w/Precision Damper/Molla (2)	Feder (2)
07000a-13	Composite Outer Housing/Cassa esterna in composito	Kunststoffhandgriff	07000a-43	Ratchet Lock Pin/Spina di blocco (2)	Stift (2)
07000a-14	Trigger Pin Seal/Guarnizione spina grilletto	Ventilstiftichtung	07000a-44	Ratchet Pawl/Piolo del cricchetto (2)	Ratschenwippe (2)
07000a-15	Trigger Pin/Spina grilletto	Ventilstift	07000a-45	Pawl Retaining Pin/Spina fermo piolo (2)	Wippenstift (2)
07000a-16	Trigger/Grilletto	Abzugshebel	07000a-46	Spacer/Distanziale	Distanzring
07000a-17	Trigger Retaining Pin/Spina ritenuta grilletto	Stift	07000a-47	Antifriction Washer/Rondella antifrizione (2)	Gleitscheibe (2)
07000a-18	Pin/Spina	Stift	07000a-48	Thrust Washer/Rondella di spinta	Druckscheibe
07000a-19	End Cap/Coperchio	Deckel	07000a-49	Retaining Ring/Anello di fermo	Sicherungsring
07000a-20	Ball Bearing/Cuscinetto a sfere	Kugellager	07000a-50	Head Cap/Coperchio testa	Schutzkappe
07000a-21	Rear End Plate/Piastra posteriore	Motorendplatte, hinten			
07000a-22	Rotor/Rotore	Rotor			
07000a-23	Vane/Paletta (4)	Lamelle (4)			
07000a-24	Cylinder Pin/Spina cilindro	Stift			
07000a-25	Cylinder/Cilindro	Zylinder			
07000a-26	Front End Plate/Piastra anteriore	Motorendplatte, vorne			
07000a-27	Ball Bearing/Cuscinetto a sfere	Kugellager			
07000a-28	Spindle/Albero	Ritzelaufnahme			
07000a-29	Planet Gear Shift/Spina ingranaggio (3)	Ritzelstift (3)			
07000a-30	Spindle Planet Gear/Ingranaggio (3)	Ritzel (3)			

Quando ordinate ricambi Indicare sempre il numero di posizione e la descrizione !

Bei Ersatzteilbestellungen bitte Positions-Nr. und Beschreibung angeben!

By Spare parts orders pls. Indicate Position-no. and Description

03.06.2005

1 of 1